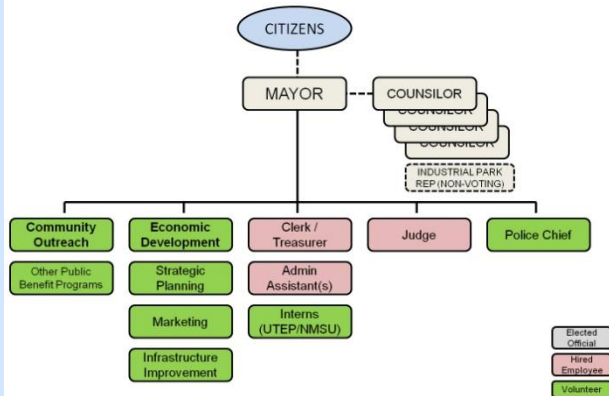


Provisional Government of Santa Teresa (PGOST)
MEETING: TUESDAY,
APRIL 14TH, 6:30 p.m.
SANTA TERESA C.C.

City of Santa Teresa



Vision:

Establish a limited but responsive, responsible and transparent city government that provides traditional governmental services to a fully wired, mixed-use community which integrates globally competitive industrial, commercial, transportation, medical, communications, and educational facilities with traditional neighborhoods offering employment, shopping, housing, recreational opportunities, and other amenities for its residents.

“Limited Government; Local Control”

Roadmap to Incorporation:

- ✓ Inform the Residents of Santa Teresa of intent to Incorporate
- Collect 200 signatures for petition
- File Plan for Incorporation with Doña Ana County
- ✓ Collect bids for Census
- Conduct Census
- Petition reviewed by NM Department of Finance and Administration (DFA-Santa Fe)
- County Commissioners Approve incorporation
- DAC conducts election for incorporation: Jan, 2016
- Election for City Leadership: Jul, 2016

Recent Developments:

-Because of a change in the official map used for incorporation, PGOST must re-submit the petition for incorporation with 200 signatures.

-The PGOST experienced a setback during coordination to submit the official petition for incorporation to DAC. The official map needed correction before the county would accept it. Since the previous petition and signatures are associated with the incorrect map, PGOST must resubmit 200 new signatures.

-The outline of the projected City Government is indicated on the front page. Based on current projections for revenue, the city will be able to function with *no increase in property tax*, while still allowing for small improvements to infrastructure (roads).

Business Plan:

- Maintain a minimalist government, relying on volunteer leadership, and keeping personnel costs low.
- Preserve low tax burden on residents and businesses to encourage economic development (no property tax increase, minimal sales tax increase).
- Retain the status of the Santa Teresa name.
- Maximize inter-government cooperation with Doña Ana County (DAC) and neighboring communities to provide essential services (police, fire, court, regulatory).
- Manage franchise utilities to reduce ancillary costs to users (water, electric, gas, cable, phone, sanitation).
- Provide incremental repairs and improvements to local infrastructure (roads, parks, etc.).

How to Help:

- Donate Money:**
- Future costs include:
 - Administrative (paper, ink)
 - Permits
 - Census (~\$1,000-20,000)
 - Travel (Santa Fe)
 - Attorney Fees
- WE NEED YOUR FINANCIAL SUPPORT!!!!** You can donate by sending a check to "PGOST" at the address on the back page, or pay by credit card on the website. All donations are tax deductible under 501 (c)(3) status.
- Contact the local elected leadership to show your support for Santa Teresa's incorporation.
- District 2 County Commissioner Dr. David Garcia
 - (575) 525-5804
 - dgarcia@donaanacounty.org
 - Commission Liaison Jess Williams
 - (575) 525-5801
 - input@donaanacounty.org
 - County Clerk Lynn Ellins
 - (575) 647-7421
 - State Rep Bill Gomez
 - (505) 986-4221
 - bealquin.gomez@nmlegis.gov

Future Engagements:

- April 14th 6:30 p.m. Meeting at Santa Teresa Country Club to collect signatures
- April 15th: Deliver petition with completed map and signatures to DAC
- TBD: Present petition to County Commissioners
- TBD: Present Resolution to Sunland Park to endorse incorporation

PGOST
 P.O.Box 1362
 Santa Teresa, NM 88008-1362
 Phone: 575.305.8950
 Fax 855-379-2409
www.SantaTeresaNM.us
 info@santateresanm.us
SantaTeresaNM@gmail.com
 [save@santateresanm](https://twitter.com/save@santateresanm)

